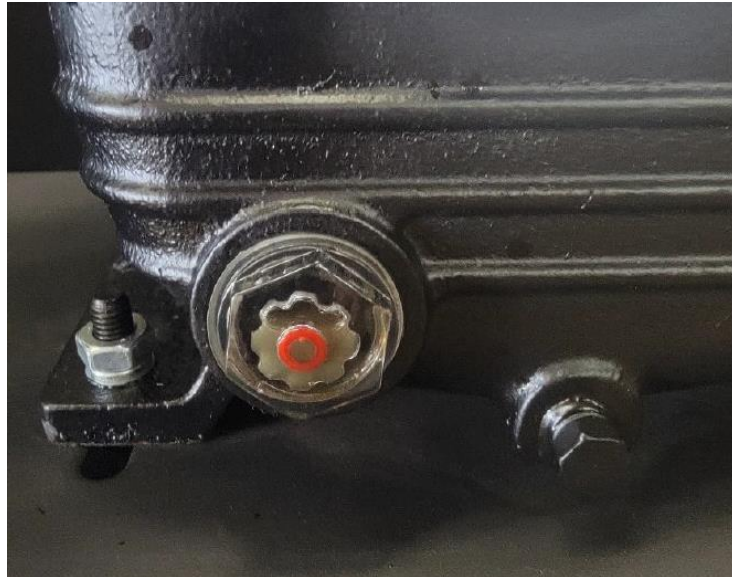


AKAC120 – AMP Kohler Series Compressor

Troubleshooting Part 2

1. If your compressor runs and engine shuts off for any reason it is due to the reasons below. This is also the case if your brand new compressor doesn't start at all.

1a. The oil level is not correct, or the oil used is incorrect. The picture below is where the oil needs to be filled on the pump. If it is too low or too high the compressor will not function correctly. Our units come with some residual oil from testing, but oil needs to be clearly seen in sight glass.



1b. The engine oil is overfilled. You should register the oil halfway up the oil dipstick. If you can clearly see oil when removing dipstick, the oil needs to be drained to correct level.

1c. The tanks are filled with compressed air. This happens if you try to start your compressors engine after using it for a period without draining the tanks of the compressed air. Release the compressor air by opening the drain valves. Leave the valves open after air leaves the



tanks and starts the engine. Once the engine starts make sure to tighten the pressure release valves to build up pressure again.

1d. The pilot unloader valve manual toggle is not used correctly. In the picture below it shows that the switch should be in the horizontal position when starting the compressor. This unloads any pressure to make starting the engine easier.



Once the compressor is started flip the switch up or down to load the compressor.

