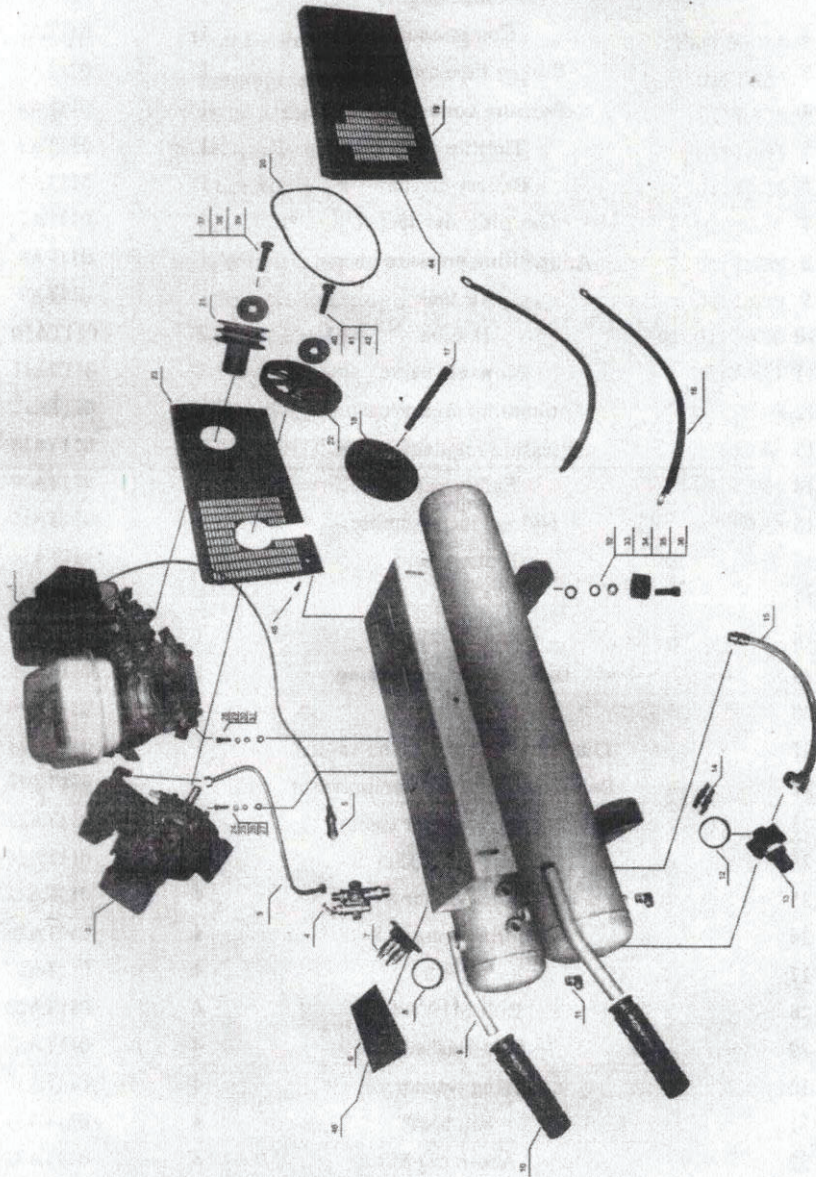


CHAPTER 9.PART LISTINGS



4	Pressure control valve	1	011TA4
5	Throttle cable	1	011TA5
6	Battery carrier	1	011TA6
7	Gas plug and socket	1	011TA7
8	Antihunting pressure gauge	1	011TA8
9	Air tank	1	011TA9
10	Handle	2	011TA10
11	Blow-off valve	1	011TA11
12	Antihunting pressure gauge	1	011TA12
13	Pressure regulator valve	1	011TA13
14	Safety valve	1	011TA14
15	Nylon tube assembly	1	011TA15
16	Battery line	2	011TA16
17	Axle	1	011TA17
18	Rubber wheel	1	011TA18
19	Belt pulley outer casing	1	011TA19
20	Strap	1	011TA20
21	Output belt pulley of the engine	1	011TA21
22	Belt pulley of the air compressor	1	011TA22
23	Belt pulley inner casing	1	011TA23
24	Bolt M8×33.5	4	011TA24
25	Plain washer 8	4	011TA25
26	Spring washer 8	4	011TA26
27	Nut 8	4	011TA27
28	Bolt M10×45	4	011TA28
29	Plain washer 10	4	011TA29
30	Spring washer 10	4	011TA30
31	Nut M10	4	011TA31
32	Acorn nut M8	4	011TA32

34	Pain washer 8	4	011TA34
35	Shock absorption mat	4	011TA35
36	Bolt M8 × 25	4	011TA36
37	Bolt 7/16" × 25	1	011TA37
38	Spring washer	1	011TA38
39	Pain washer	1	011TA39
40	Bolt M8 × 35	1	011TA40
41	Spring washer 8	1	011TA41
42	Pain washer 8	1	011TA42
43	Split pin 4 × 35	1	011TA43
44	Screw M8 × 12	1	011TA44
45	Bolt M8 × 20	1	011TA45
46	Bolt M6 × 12	1	011TA46