



POWERED BY
KOHLER®

WATER PUMP OPERATION INSTRUCTION



THIS MANUAL CONTAINS IMPORTANT INFORMATION REGARDING SAFETY, OPERATION, MAINTENANCE AND STORAGE OF THIS PRODUCT. BEFORE USE, READ CAREFULLY AND UNDERSTAND ALL CAUTIONS, WARNINGS, INSTRUCTIONS AND PRODUCT LABELS. FAILURE TO DO SO COULD RESULT IN SERIOUS PERSONAL INJURY AND/OR PROPERTY DAMAGE

TABLE OF CONTENTS

CONGRATULATIONS!	2
INTRODUCTION	2
GENERAL SAFETY	2-4
RECOGNIZE SAFETY SYMBOLS, WORDS AND LABELS	2-4
IMPORTANT INFORMATION ABOUT THIS MANUAL	4
UNPACKING & INSPECTION	5
SAFETY WARNINGS	5-7
GENERAL SAFETY RULES	5-7
SAFETY RULES FOR GASOLINE ENGINES	7-11
SYMPTOMS OF CARBON MONOXIDE POISONING	8
ADDING OR DRAINING FUEL TO OR FROM THE ENGINE	8
STARTING THE ENGINE	8-9
MAKING ADJUSTMENTS OR REPAIRS TO THE ENGINE	10
TESTING SPARK PLUG FOR SPARK	10
TRANSPORTING OR REPAIRING EQUIPMENT	10
STORING FUEL OR EQUIPMENT WITH FUEL IN FUEL TANK	11
SAFETY RULES FOR PRESSURE WASHERS	11-13
FUNCTIONAL DESCRIPTION	14
PRESSURE WASHER TERMINOLOGY	15
ASSEMBLY / ATTACHMENTS	15-18
PRESSURE WASHER	15-16
PRESSURE HOSE TO PRESSURE PUMP	16
PRESSURE HOSE TO SPRAY GUN	16
SPRAY WAND TO SPRAY GUN	16
SELECTING THE RIGHT NOZZLE FOR THE JOB	17
NOZZLES TO SPRAY WAND	17-18
PRESSURE PUMP TO WATER SUPPLY	18
PREPARING THE PRESSURE WASHER	18-20
PRESSURE PUMP	18
ADDING ENGINE OIL	18
LOW OIL SENSOR	19
ADDING FUEL	19-20
STARTING	20-21
OPERATING	21-25
USING THE SPRAY GUN	22
WASHING / CLEANING	22-23
PRESSURE ADJUSTMENT	23
USING CHEMICALS AND CLEANING SOLVENTS	23-24
SHUTTING DOWN	24-25
MAINTENANCE	25-26

STORAGE	27-29
ENGINE	27
PRESSURE PUMP	28
PRESSURE WASHER	28-29
PREPARING FOR USE AFTER STORAGE	29
TROUBLESHOOTING GUIDE	30-34
SPECIFICATIONS	34
1 YEAR LIMITED WARRANTY	35-41

CONGRATULATIONS!

Thank you for choosing this pressure washer. Our aim is to provide you with quality professional products, and we want you to be totally satisfied with your product and our Customer Service. If any help or advice is needed, please contact us at
When properly cared for, this product will give you many years of satisfaction.

INTRODUCTION

This instruction manual is intended for your benefit. Please read and follow the safety, installation, maintenance and troubleshooting steps described within to ensure your safety and satisfaction. The contents of this instruction manual are based upon the latest product information available at the time of publication. The manufacturer reserves the right to make product changes at any time without notice.

GENERAL SAFETY

WARNING

READ AND FOLLOW ALL INSTRUCTIONS.

Failure to follow all instructions in this manual may result in severe personal injury or death. Keep this manual and refer to it for Safety Instructions, Operating Procedures, and Warranty.



SAVE THESE INSTRUCTIONS FOR FUTURE REFERENCE.

RECOGNIZE SAFETY SYMBOLS, WORDS AND LABELS

The safety instructions provided in this manual are not intended to cover all possible conditions and practices that may occur when operating, maintaining and cleaning power tools.

Always use common sense and pay particular attention to all the **DANGER**, **WARNING**, **CAUTION** and **NOTE** statements in this manual.



This is the safety alert symbol. It is used to alert you to potential personal injury hazards. Obey all safety messages that follow this symbol to avoid possible injury or death.



DANGER indicates an imminently hazardous situation which, if not avoided, will result in death or serious injury.



WARNING

WARNING indicates a potentially hazardous situation which, if not avoided, could result in death or serious injury.



CAUTION

CAUTION indicates a potentially hazardous situation which, if not avoided, may result in minor or moderate injury.



CAUTION

CAUTION used without the safety alert symbol indicates a potentially hazardous situation which, if not avoided, may result in property damage.



NOTE

NOTE provides additional information that is useful for proper use and maintenance of this tool. If a **NOTE** is indicated, make sure it is fully understood.

In addition to **SAFETY ALERTS** listed above, there could also be numerous symbols alerting the operator that specific safety measures are required to safely operate this tool. Learn these **SAFETY SYMBOLS** as well as the **SAFETY ALERTS** to prevent injury to the operator and to bystanders.



READ OPERATING INSTRUCTIONS: Read and understand tool labels, safety warnings and precautions in this manual before operating the tool. Failure to follow **WARNINGS** could result in serious injury or even death to the operator or bystanders.



FIRE HAZARD: Heat from engine exhaust can ignite combustible materials, building structures or gas tanks resulting in a fire. Place the tool on a flat surface a safe distance from buildings or other combustible material. Ensure exhaust is directed away from tool.



ELECTRICAL SHOCK: This tool produces hazardous electrical voltage. Read and become familiar with this manual's **WARNINGS** and **CAUTIONS** so that it is installed and used properly.



WEAR APPROVED EYE PROTECTION: This tool has rotating and moving parts that could become airborne if damaged. Always wear approved eye protection when operating equipment with moving parts. Safety glasses must conform to the requirements of American National Standards Institute (ANSI) Z87.1 and provide protection against flying particles from both front and side.



POISONOUS FUMES: This tool uses a gasoline powered engine that produces poisonous fumes from its exhaust. Always make sure there is adequate ventilation when operating this equipment.



EXPLOSION HAZARD: Fuel and its vapors are extremely flammable and explosive. Fire or explosion from these vapors can cause severe burns or even death.



ROTATING PARTS: Starter and other rotating parts on this tool can entangle loose clothing, long hair and accessories resulting in moderate to severe injury.



HOT SURFACES: Engine muffler and other engine parts can become very hot. Coming in contact with hot engine components can cause serious burns. Hot exhaust gases from the engine can cause clothing to ignite if in contact for any length of time.



KICKBACK: Starter cord can kickback (recoil) very rapidly. Kickback will recoil starter cord quicker than you can let go. This action can result in broken bones, bruises, sprains or fractures.



UNIT IS HEAVY: Take care when lifting or moving unit.



INJECTION HAZARD: Pressure washers can produce fluid streams severe enough to penetrate animal and human flesh.



SLIPPING and FALLING: Pressure washers produce puddles of slippery liquid that can result in falls. Kickback from spray wand can result in falls when using unstable platforms.

IMPORTANT INFORMATION ABOUT THIS MANUAL

⚠ WARNING Improper and unsafe use of this pressure washer can result in death, fire and/or bodily injury. This instruction manual contains important information about product safety. Keep the instruction manual available for others to read before they use the pressure washer.

Improper maintenance and operation are responsible for the majority of accidents involving gas pressure washers. The largest portion of these could be prevented by recognizing the basic safety rules and precautions. Most accidents can be avoided if the operator recognizes a potentially hazardous situation before it happens and by observing appropriate safety rules and procedures as outlined in this manual.

Basic safety precautions are outlined in the **SAFETY** portion of this manual and throughout the text in this manual where a potential hazard might occur.

Hazards that **MUST** be avoided to prevent serious injury follow headers marked **DANGER** or **WARNING**. These same precautions are placed as labels on the tool itself.

NEVER use this pressure washer for applications that are **NOT** specified in this manual.

UNPACKING & INSPECTION

After opening the carton, unpack your new pressure washer and related parts & accessories. Please inspect it carefully for any damage that may have occurred during transit. If any parts are missing, please contact our Consumer Helpline: Phone:

⚠ WARNING Do not operate this pressure washer if damaged during shipment, handling or misuse. Damage may result in bursting, which can cause serious injury or property damage. All damaged parts must be repaired or replaced as needed prior to operating this pressure washer.

Check to see that all nuts, bolts and fittings are secure before putting this pressure washer into service. If you have any questions, or require assistance with damaged or missing parts, please contact our Consumer Helpline: Phone:

Please have the serial number, model number, date of purchase, and parts list (with missing parts identified) available for reference when calling.

MODEL NUMBER: _____

SERIAL NUMBER: _____

DATE OF PURCHASE: _____

SAFETY WARNINGS

READ ALL SAFETY WARNINGS BEFORE USING PRESSURE WASHER.

GENERAL SAFETY RULES

⚠ WARNING

People with electronic devices, such as pacemakers, should consult their physician(s) before using this product. Operation of electrical equipment or the electromagnetic wave created by the engine spark plug in close proximity to a heart pacemaker could cause interference or failure of the pacemaker.

WARNING: This product contains chemicals known to the State of California to cause cancer and birth defects or other reproductive harm.

WARNING: The Engine Exhaust from this product contains chemicals known to the State of California to cause cancer, birth defects or other reproductive harm.

⚠ WARNING

Keep work area clean and well lit. Messy areas and cluttered workbenches invite personal injury and/or property damage. Clear all work areas of unnecessary tools, debris, furniture, etc.

Make sure the work area is well ventilated. Never operate in an enclosed area.

Do not place objects on top or against the tool.

Handle correctly. Always operate according to the instructions provided. Never allow the tool to be operated by children, individuals unfamiliar with its operation or unauthorized personnel.

Keep children and visitors away. All children should be kept away from the work area. **DO NOT** let children handle the tool. Maintain a safe distance for any person near the work area.

Childproof the workshop. The use of master switches and padlocks is highly recommended. Remove starter keys where applicable.

Stay alert, watch what you are doing, and use common sense. Do not stand on tool. Do not use tool while tired or under the influence of drugs, alcohol or medication. A moment of inattention while operating the tool may result in serious personal injury.

Operating any tools or equipment under the influence of drugs, alcohol, or medication can cause personal injury to yourself and others.

Use the right tool. Use tools properly and for their intended task. Do not force a small tool to do the job of a heavy-duty tool. Using the right tool to do the right job will make doing the job safer.

Always make sure the tool is in the OFF position when making adjustments, changing parts, or performing any maintenance.

Service must be performed only by qualified repair personnel. Service or maintenance by unqualified personnel may result in a risk of injury.

Do not use the tool if the power switch does not turn it "ON" or "OFF". A tool that cannot be controlled with the switch is dangerous and must be repaired.

Store all maintenance tools away from the immediate area before turning ON the tool.

Do not overreach. Proper footing and balance is a must at all times while using tools. Unstable support may lead to personal injury. Do not stand on the tool. Serious injury could result if the tool tips over or you accidentally contact tool.

When using accessories, consult the owner's manual provided by the manufacturer. The use of improper accessories may cause risk of injury to yourself and others.

⚠ WARNING

Keep protective guards in place and in proper working condition.

Maintain tools and equipment with care. They will function better and more safely when kept clean and in good working condition. Keeping the tool clean, dry, and free of grime will add to its life and performance.

Do not use the tool for applications other than specified.

SAFETY RULES FOR GASOLINE ENGINES

⚠ WARNING

Carbon monoxide is a product of incomplete combustion, such as exhaust from the engine. Carbon monoxide is colorless, odorless and tasteless and can kill in a matter of minutes.



Gas particulate filters and respirators will not protect someone from carbon monoxide poisoning. If symptoms of carbon monoxide poisoning appear, take the affected person outdoors immediately and away from all structures and equipment that could produce the gas. Call for emergency medical treatment and make them aware of the situation.

Operate pressure washer only outdoors. Do not allow exhaust gas fumes from entering confined areas through windows, open doors, ventilation ducts and other openings.

Do not start or run engine indoors or an enclosed area, such as a garage (even if windows and doors are open). This also applies to the engine compartment of a recreational vehicle (RV).

The engine exhaust from this product contains chemicals known to the State of California to cause cancer, birth defects or other reproductive harm.

NOTE

Install a battery powered Carbon Monoxide (CO) detector near all bedrooms to alert occupants of dangerous levels of carbon monoxide. Carbon monoxide is a colorless, odorless, very poisonous gas.

The Emission Control System for engine is warranted for standards set forth by the Environmental Protection Agency.

SYMPTOMS OF CARBON MONOXIDE POISONING

Carbon monoxide (CO) is a colorless, odorless, tasteless, extremely toxic gas that can **KILL** in a matter of minutes. Breathing air containing carbon monoxide produces symptoms of headache, dizziness, loss of muscular control, a sleepy feeling and finally coma. Moderate or severe brain damage can result from inhaling air containing carbon monoxide. Carbon monoxide is a product of incomplete combustion of fuels and occurs in exhaust fumes of fuel-burning heaters and all internal combustion engines. Carbon Monoxide collects in spaces where there is no constant air flow or ventilation. **If you start to feel sick, dizzy or weak due to exposure to CO while using gasoline engine, GET TO FRESH AIR IMMEDIATELY.**

ADDING OR DRAINING FUEL TO OR FROM THE ENGINE



⚠ WARNING

Fuel and fuel vapors are extremely flammable and explosive. Fire and explosion can result in severe burns and even death.

- Turn engine to the **OFF** position and let cool at least two minutes before removing fuel cap. Loosen cap slowly to relieve pressure in fuel tank.
- **DO NOT** fill or drain fuel tank inside enclosed structures. Accidental sparks can result in fires or explosions leading to severe burns and even death.
- **DO NOT** overfill fuel tank. Leave ample space for expansion of fuel.
- **DO NOT** start engine in area of fuel spillage. Fire and explosion can occur.
- Keep fuel away from sparks, open flames, pilot lights, heat and other ignition sources. **DO NOT** smoke while operating the engine.
- **DO NOT** tip engine or equipment at angle that could result in fuel spilling from fuel tank.

STARTING THE ENGINE

⚠ WARNING

Starter cord kickback (rapid retraction) can pull your hand and arm toward the engine faster than it can be let go of. Failure to be aware of this function can result in broken bones, fractures, bruises and sprains can result.



- When starting the engine, pull cord slowly until resistance is felt, then pull rapidly to avoid kickback.

⚠ WARNING

Unintentional sparking can result in fire or electric shock. Failure to observe this warning can result in property damage, severe burns and/or death.



- Ensure spark plug is in place before attempting to start engine.
- Ensure muffler is secured to engine before starting.
- Ensure fuel cap is on fuel tank and tightened securely.
- Ensure air cleaner is clean and properly attached to engine.



A dirty air cleaner element changes the air to fuel ratio and promotes incomplete combustion of fuel increasing the output of carbon monoxide. Always make sure air cleaner element is clean before every operation of the engine.

- **DO NOT** crank engine with spark plug wire removed. The resulting spark could ignite spilled fuel.

⚠ WARNING

Do not contact muffler area with engine running. Muffler gets extremely hot and can cause severe burns. Exhaust gases can ignite combustible items such as clothing or structures in close proximity. Gases leaking from worn muffler can heat up and damage fuel tank resulting in fire or explosion.



- **DO NOT** touch hot parts of engine or muffler.
- **AVOID** hot exhaust gases.
- Keep a minimum of 5 ft. (1.5M) clearance on all sides of the engine including top.

⚠ WARNING

Starter and other rotating parts of engine can entangle hair, hands, clothing and accessories.



- **NEVER** operate with protective housing or covers removed.
- **DO NOT** use while wearing loose clothing or jewelry that may get caught up in starter or other rotating parts. Tie up long hair or wear hair net or cap.

MAKING ADJUSTMENTS OR REPAIRS TO THE ENGINE

WARNING

Excessively high operating speeds increase risk of injury and damage to engine. Excessively low speeds produce heavy load on engine.

- **DO NOT** attempt to alter pre-set governed speed. Engine governor is factory set to supply optimum output horse power (HP) when running at governed speed.
- **DO NOT** modify engine in any way.

TESTING SPARK PLUG FOR SPARK

WARNING

- **DO NOT** check spark plug for spark by removing from head cylinder.
- Disconnect spark plug wire from spark plug and cover tip with non-conducting material such as electrical tape to prevent it from coming in contact with spark plug, fuel tank or other parts of the engine where damage can result from sparking.
- Replace a defective spark plug only with authorized parts.
- Use approved spark plug tester.

TRANSPORTING OR REPAIRING EQUIPMENT

WARNING

RISK OF PROPERTY DAMAGE WHEN TRANSPORTING PRESSURE WASHER

Turn off the pressure washer before transport. Use caution when moving the pressure washer. Oil can leak or spill and could result in fire or breathing hazard, serious injury or death. Oil leaks will damage carpet, paint, or other surfaces in vehicles or trailers. Be sure to use the handle to lift or carry the pressure washer.

CAUTION

- The wheel kit is not designed for over-the-road use. Pressure Washer must be transported in a vehicle or on a trailer.
- **Unit is heavy.** Take care when lifting or moving unit.
- Transport or repair with fuel tank **EMPTY** to prevent an unintentional spark igniting fuel vapors resulting in a fire or an explosion.
- Transport or repair with spark plug wire **DISCONNECTED**.



STORING FUEL OR EQUIPMENT WITH FUEL IN FUEL TANK

WARNING

Store away from furnaces, stoves, water heaters, clothes dryers, and all other appliances with pilot lights or other ignition sources. These appliances can heat fuel tanks and ignition sources can ignite fuel vapors.

SAFETY RULES FOR PRESSURE WASHERS

DANGER

RISK OF FIRE OR EXPLOSION



Always store fuel away from the pressure washer and in an approved container.

Fuel and fuel vapors are extremely flammable and explosive. Fire and explosion can result in severe burns and even death.

Make sure all ventilation openings are clear and free from restrictions. Restricted ventilation openings can cause overheating and/or fire.

WARNING



Do not operate the pressure washer in explosive areas, such as in the presence of flammable liquids, gases or dust. Pressure washers can create sparks which may ignite the dust or fumes.

Wear proper apparel. Remove your jewelry before using pressure washer. Do not wear loose clothing, necklaces, rings, bracelets, or other jewelry, which may get caught in moving parts. Nonskid footwear and electrically non-conductive gloves are highly suggested while working. Wear protective hair covering to contain long hair.

Be responsible for your hearing. Wear hearing protection during extended periods of operation.

Do not use the pressure washer if excessive noise or vibration is present. Have it repaired immediately.

Store the pressure washer indoors, in a dry, secured area away from other equipment. Never store the pressure washer near an open flame or flammable materials.



Keep pressure washer a minimum of 5 feet (1.5 m) of clearance on all sides including overhead.

SPECIAL REQUIREMENTS

There may be Federal or State Occupational Safety and Health Administration (OSHA) regulations, local codes or ordinances that apply to intended usage of internal combustion engines. Consult a local agency responsible of usage of this type of equipment.

WARNING

RISK OF INJURY



Pressure washer produces fluid pressures and velocities high enough to penetrate human and animal flesh which could result in serious injury or amputation.

Ensure all connections are tightened securely. Inspect all hoses to ensure they are not damaged or kinked. Loose connections or damaged hoses can result in injection injuries.

Ensure all fittings are properly connected. Pull on connection to ensure fittings are secure. Improperly connected fittings can unexpectedly separate resulting in injury.

NEVER place hands in front of nozzle.

NEVER attempt to attach or remove spray wand or hose fittings while pressure washer system is pressurized.

DO NOT treat fluid injection injuries as a simple cut. See immediate medical attention.

DO NOT allow pressure hose to come in contact with engine muffler.

HIGH VELOCITY fluid spray can cause objects to break, propelling particles at high speeds.

ALWAYS wear approved safety glasses when using or doing maintenance on pressure washers.

NEVER substitute safety glasses for **GOGGLES**. Injury to eyes could occur.



ALWAYS wear protective clothing to prevent accidental spraying.

DO NOT permanently secure spray wand trigger in open position.

DO NOT use spray wand that does not have a trigger lock or trigger guard in place and in proper working order.

WARNING

DO NOT use acids, toxic or corrosive chemicals, poisons, insecticides, flammable solvents or bleach with pressure washer. Use of these chemicals can result in damage to equipment or serious injury or death.



DO NOT direct spray toward electrical outlets, switches or products connected to electrical service. Failure to observe this warning can result in electrocution resulting in severe electrical shock or burns and possibly resulting in death.

NEVER run the pressure pump without the water supply connected and turned on. Non-repairable damage to the pump will occur.

RISK OF FALLING

Pressure washer can create puddles of slippery solutions that can become hazardous.



Ensure you stand on a stable surface while operating pressure washer. Initial kickback from engaging spray wand can you to lose your balance and fall resulting in minor to severe injuries.

Use extreme caution if you must operate pressure washer from a ladder or scaffolding. Kickback from spray wand can result to loss of balance and result in a fall that could cause serious injuries.

When cleaning pressure washer, ensure there are adequate slopes for drainage so solutions don't create puddles around unit that could result in slipping and falling.

Firmly hold spray wand with both hands when using high pressure spray avoiding injury should spray wand kick back.

CAUTION

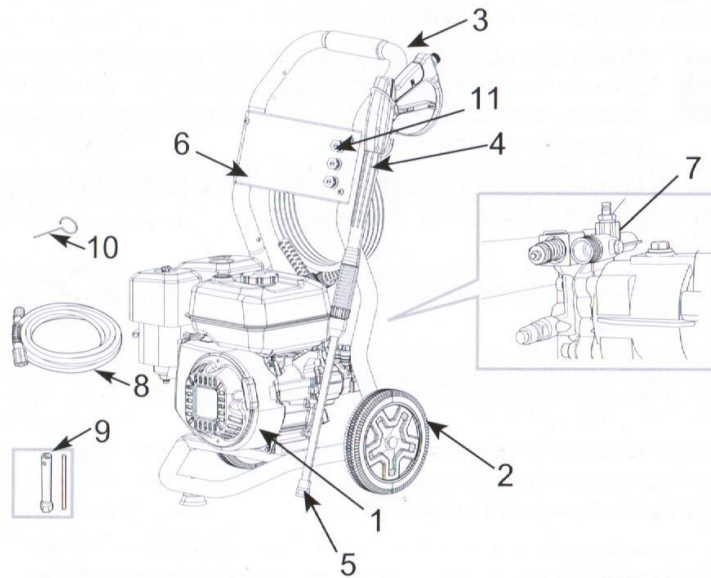
The pressure washer must be run with the rubber feet resting on a flat and stable horizontal surface.

The pressure washer must be used in a clean and well-ventilated area. Keep pressure washer a minimum of 5 feet (1.5 m) of clearance on all sides including overhead.

DO NOT place pressure washer in an area:

- Where there is evidence of oil or gas leaks.
- Where flammable gas vapors or materials may be present.
- Where extremely dirty air or water could be drawn into the pressure washer.

FUNCTIONAL DESCRIPTION



PRESSURE WASHER FEATURES:

- | | |
|--------------------|----------------------------|
| 1. Gasoline Engine | 7. Pressure Pump |
| 2. Wheel Kit | 8. High Pressure Hose |
| 3. Frame | 9. Tool Kit |
| 4. Spray Gun | 10. Nozzle Cleaning Needle |
| 5. Spray Wand | 11. Nozzle |
| 6. Nozzle Panel | |

PRESSURE WASHER TERMINOLOGY

Following are common terms associated with the use of pressure washers:

PSI: Pounds per square inch – common unit measure used for water pressure, air pressure, hydraulic pressure and pounds of force.

GPM: Gallons per minute (liters per minute [metric]) – common unit measure used for flow rate of water.

Bypass Mode: In bypass mode, high pressure pump recirculates water because spray gun trigger is not squeezed.

Thermal Relief Valve: When in Bypass Mode, this valve releases a jet of water to prevent water temperatures from reaching harmful levels that damage the pump. Once the water has cooled, the thermal relief valve will reset itself. Do not allow pump to run without spraying (in Bypass Mode) for more than 5 minutes.

ASSEMBLY / ATTACHMENTS

This pressure washer requires some assembly (tools provided) and will be ready for use after servicing with manufacturer approved oil and fuel. If you have any problems with the assembly of your pressure washer, please call the pressure washer helpline at 1-626-888-3598. If calling for assistance, please have the model, revision, and serial number from the data tag available.

PRESSURE WASHER

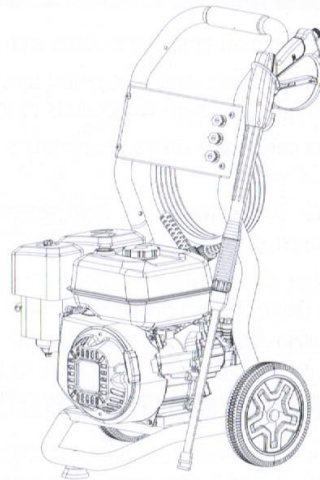


WARNING Unit is heavy. Do not attempt to lift and remove the pressure washer unit from the carton.



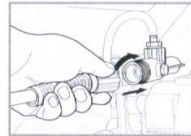
1. Using a box cutter, open carton completely by cutting the four corners allowing the sides to lay flat. Leave pressure washer on the carton.
2. Remove all items except the pressure washer from the box and inspect for completeness (See Functional Description).
3. Carefully tip the pressure washer forward and place on its front side and proceed to assemble the unit using the provided tools.
4. Insert the axles through the holes in the bottom frame from inside as shown. Assemble the wheels to the axles from outside (using the cotter pins). To secure the Wheels to the axles, insert the Cotter Pins inside the small holes in the axles and bend back the end of the Cotter Pins using a pair of pliers (not provided).
5. Assemble the Legs to the bottom frame tubing (using the washers, nuts and bolts) as shown. Tighten all mounting hardware.
6. After completion of wheel/leg assembly, carefully place the pressure washer on its wheels and legs.

7. Assemble the handle to the frame tubing as shown.
8. Assemble the top gun holder to the frame as shown.



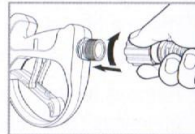
PRESSURE HOSE TO PRESSURE PUMP

Connect the hose to the pressure pump outlet and **FIRMLY** tighten the nut by hand.

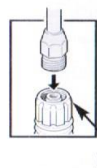


PRESSURE HOSE TO SPRAY GUN

Connect the hose to the spray gun and **FIRMLY** tighten the nut by hand.



SPRAY WAND TO SPRAY GUN



NUT

1. Remove the protective plastic cap at the inlet of the wand.
2. Connect the spray wand to the spray gun and **FIRMLY** tighten the nut by hand.

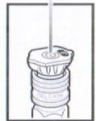
SELECTING THE RIGHT NOZZLE FOR THE JOB

NOTE

To prevent damage to your surface and to select an appropriate nozzle size for your application, always start with lowest pressure nozzle size (White) and continue changing to the higher nozzle size until the best work result is achieved.

The Pressure Washer comes furnished with three spray nozzles. Each nozzle is color coded and delivers a specific spray pattern and pressure for a particular cleaning job. The size of the nozzle determines the size of the fan spray and the pressure out of the nozzle.

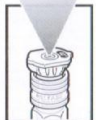
0° Nozzle – Red: This nozzle delivers a pinpoint stream of pressurized water and is extremely powerful. It covers only a small area of cleaning. This nozzle should only be directed at surfaces that can withstand high pressure such as metal or concrete. Do not use this nozzle to clean wood.



25° Nozzle – Green: This nozzle delivers a 25 degree spray pattern for intense cleaning of larger areas. This nozzle should only be used on areas that can withstand pressure from this nozzle.



Chemical Nozzle – Black: This nozzle is used to apply special chemicals and cleaning solutions. This nozzle produces the weakest pressure stream of the three nozzles.



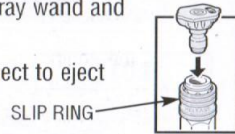
The Pressure Washer nozzles are stored in receptacles on a panel mounted to the handle of the washer. Colors on the panel identify nozzle location and spray panel.

NOZZLES TO SPRAY WAND

⚠ WARNING

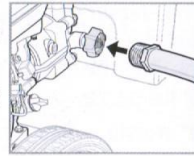
Never place hands in front of nozzle. Never grasp hose or fittings during Pressure Washer operation. Never attempt to attach or remove spray wand or hose fittings while Pressure Washer system is pressurized.
Turn off Pressure Washer and lock the Gun Trigger before attempting to change pressure nozzles.

1. To attach, insert nozzle into female quick-disconnect spray wand and press to snap in the nozzle.
2. To detach, slide down slip ring on female quick-disconnect to eject the nozzle.



PRESSURE PUMP TO WATER SUPPLY

1. Connect the garden hose to the water supply and turn water supply on to fill the hose with water and also remove any debris in the hose. Turn OFF water supply.
2. Make sure that the filter inside Pressure Washer water inlet is clean and undamaged. Thread the garden hose fitting into water hose inlet. **FIRMLY** hand tighten the inlet nut.
3. Turn on water supply.



NOTE

The Pressure Washer requires a minimum of 20 PSI and a flow rate of 5 GPM.

PREPARING THE PRESSURE WASHER

⚠ WARNING

Improper treatment of Pressure Washer can damage internal components and shorten the life of unit. Failure to follow this warning will void warranty.

PRESSURE PUMP

The pressure pump requires no preparation. If you notice any sign of oil leakage in and around the pump, **DO NOT** operate the pressure washer. Please call the pressure washer helpline at

ADDING ENGINE OIL

1. Move the Pressure Washer **OUTSIDE** and place on a flat and level surface.
2. Remove the engine oil dip stick and place funnel in the oil reservoir.
3. Pour the supplied engine oil (30 weight) until oil level reaches the threads inside the oil reservoir.
4. Hand tighten oil dip stick and wipe off any spilled oil.



DIP STICK

LOW OIL SENSOR

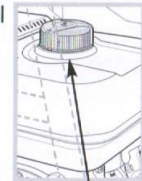
To prevent the engine damage caused by an insufficient amount of oil in the crankcase, engine is equipped with a low oil sensor. If the oil is below the safe amount, the sensor will activate and will prevent engine start-up or will stop the running engine.

If Pressure Washer shuts off and the oil level is within specifications, check to see if Pressure Washer is sitting at an angle that forces oil to shift.

Place on an even surface to correct this. If engine fails to start, the oil level may not be sufficient to deactivate low oil level sensor. Add oil as described above.

ADDING FUEL

1. Move the Pressure Washer **OUTSIDE** and place on a flat and level surface.
2. Remove the gas tank cap. Carefully add 87 Octane (or higher) grade **unleaded** gasoline to the tank. **DO NOT OVERFILL**. Leave room for the gasoline to expand.
3. Replace and hand tighten gas cap and wipe off any spilled fuel.



CAP

⚠ WARNING

Fuel and fuel vapor are extremely flammable and explosive. Fire or explosion from misuse of fuel can cause severe burns and even death.

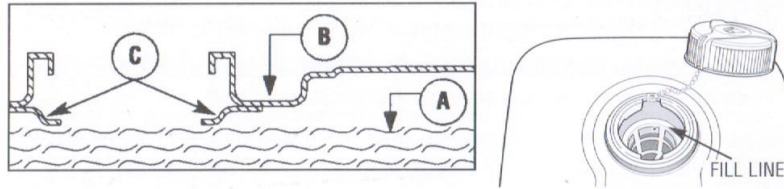


Failure to use fuel as recommended in this manual will void the warranty.

WHEN ADDING FUEL TO PRESSURE WASHER, OBSERVE THE FOLLOWING:

- **DO NOT** use unapproved gasoline such as E85 (85% ethanol/15% gasoline).
- **DO NOT** mix oil with gasoline.
- **DO NOT** modify engine to run on alternate fuels.
- Turn Pressure Washer **OFF** and let it cool for at least two minutes before removing fuel cap. Loosen fuel cap slowly to release pressure.
- Keep fuel away from sparks, open flames, pilot lights, heat and other ignition sources.
- **DO NOT** light a cigarette or smoke near open fuel tank or container.
- Clean area around fuel fill cap and slowly remove cap to allow any pressure to escape.
- Install fuel cap and allow any spilled fuel to evaporate before starting engine.

- **DO NOT** overfill fuel tank. Slowly add unleaded gasoline (A) to fuel tank (B). Use extreme caution not to fill fuel above baffle (C). This allow appropriate space for fuel expansion.



STARTING

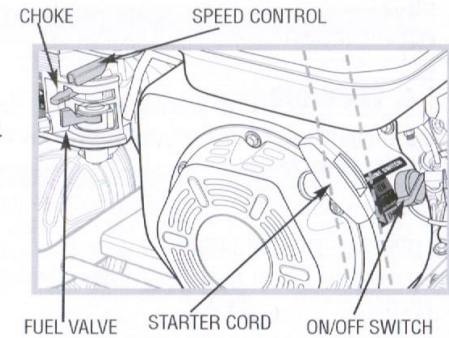
PRIOR TO STARTING THE PRESSURE WASHER, MAKE SURE THAT YOU HAVE:

1. Selected a proper size nozzle for the job at hand (see "SELECTING THE RIGHT NOZZLE")
2. Attached the Pressure Washer to the water source and turned on the source (see "ATTACHING THE PUMP TO WATER SUPPLY").

⚠ WARNING **DO NOT** run the pump without the water supply connected and turned on. Damage to the Pressure Washer resulting from failure to follow this instruction **WILL** void the warranty.

3. For your protection, wear protective safety glasses (provided).
4. Move the Pressure Washer **OUTSIDE** in a fully **VENTILATED** area.
5. Place the Pressure Washer on a **FLAT** and level surface and close to the working surface. Keep a minimum of **5 ft. (1.5 meters) CLEARANCE** on all sides of the engine including top. Face the engine exhaust outlet **AWAY** from dwellings.
6. Make sure the Throttle lever is set to the "**FAST**" position (left).
7. Slide the Fuel Valve lever to "**ON**" position (right) to allow the fuel to flow to the engine.
8. Slide the Choke Lever to "**START**" position (left).
9. Turn the Engine **ON/OFF** switch clockwise to **ON** position.
10. Point nozzle to a safe direction and squeeze the Spray Gun trigger to allow for easier engine start.

11. To start the engine, pull Starter cord slowly until resistance is felt, then pull rapidly to avoid kick back. Repeat until engine starts to run. Release the trigger.
12. Slide Choke Lever to "**RUN**" position (right).



OPERATING

⚠ WARNING

Do not leave Pressure Washer in bypass mode for more than two minutes at a time. Water temperature inside the pressure pump will rise to a dangerous level resulting in damage to the internal components of the pump. Failure to follow this warning will void warranty.

DO NOT run the pressure pump without the water supply connected and turned on. Damage to the Pressure Washer resulting from failure to follow this instruction **WILL** void the warranty.

ALWAYS wear approved safety glasses when operating Pressure Washers. Spray can splash back or propel objects, including incorrectly attached accessories.



⚠ WARNING

The high pressure stream of water that this equipment produces can cut through skin and its underlying tissues, leading to possible amputation.

Spray gun traps high water pressure, even when the motor is stopped and water is disconnected, which can cause injury.

Kickback from spray gun can cause you to fall.



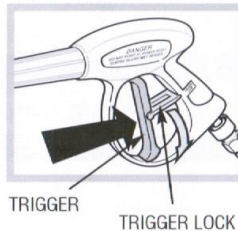
USING THE SPRAY GUN

⚠ WARNING To prevent accidental discharge of high pressure water, the trigger lock on the trigger should be engaged whenever the pressure washer is not in use.

To disengage the Trigger Lock, push the lock down and into its original position.

TO OPERATE THE TRIGGER:

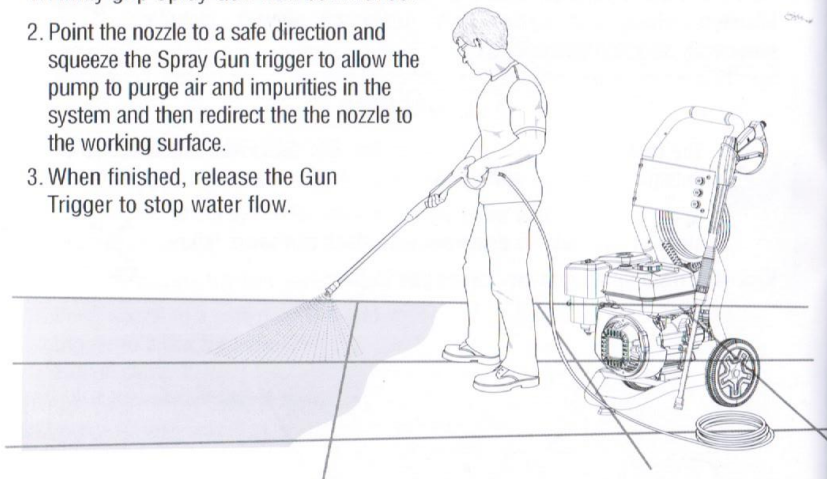
1. Squeeze the trigger to start water flow through the nozzle.
2. Release the trigger to stop water flow.



WASHING / CLEANING

⚠ WARNING SOME ENGINE PARTS CAN BECOME EXTREMELY HOT. Do not allow the pressure hose come in contact with engine exhaust system which can cause damage to the hose. Damaged hoses can burst and can cause injection injuries.

1. Firmly grip Spray Gun with both hands.
2. Point the nozzle to a safe direction and squeeze the Spray Gun trigger to allow the pump to purge air and impurities in the system and then redirect the the nozzle to the working surface.
3. When finished, release the Gun Trigger to stop water flow.



USAGE TIPS:

- For most effective cleaning, keep spray nozzle from 8 to 24 inches away from cleaning surface.
- If you get spray nozzle too close, you may damage surface being cleaned.
- **DO NOT** get closer than 6 inches when cleaning tires.

PRESSURE ADJUSTMENT

Increase distance: To vary the pressure on the surface being cleaned, vary the distance between spray wand and the surface being cleaned.

Change pressure wand nozzle: Completely shut down Pressure Washer and stop gasoline engine. Change spray nozzle for desired pressure (see "SELECTING THE RIGHT NOZZLE"). Restart engine.

USING CHEMICALS AND CLEANING SOLVENTS

NOTE

Use only soaps and chemicals designed for use with Pressure Washers. **DO NOT USE CHLORINE BLEACH.**

Chemicals, soaps and cleaning solvents will not siphon when a high pressure nozzle is used. Use the Chemical Nozzle (Black).

TO RINSE:

1. Replace the nozzle with an appropriate high pressure nozzle (see "SELECTING THE RIGHT NOZZLE"). Squeeze the trigger and wait for the detergent to clear.
2. Keep the spray gun a safe distance from the area you plan to spray.
3. Apply a high pressure spray to a small area, and then check the surface for damage. If no damage is found, it is okay to continue cleaning.
4. Start at the top of the area to be rinsed, working down with same overlapping strokes as you used for washing and applying detergent.

TO FLUSH SYSTEM

When you have completed the use of detergent injection system:

1. Turn off the engine and fill the detergent tank with clean water.
2. Remove the nozzle and then turn engine back on.
3. Point the wand toward a safe direction and squeeze the trigger to flush clean water through the detergent tank and the system until it is thoroughly clean.
4. Shut off the Detergent Tank Valve.

⚠ WARNING

Leaving chemicals and cleaning solutions inside the pressure pump could damage it. Damages created by leaving soaps, chemicals and cleaning solutions inside the pump can void the warranty.

CLEANING TIPS:

- Never use the Pressure Washer water inlet to siphon detergent or wax.
- If you have the nozzle too far away from the surface being washed, the cleaning will not be as effective.

IMPORTANT: DO NOT get closer than 6 inches when cleaning.

SHUTTING DOWN

⚠ WARNING

SOME ENGINE PARTS CAN BECOME EXTREMELY HOT. If you intend to disconnect the high pressure hose after completing a wash, avoid touching the engine exhaust system while disconnecting the high pressure hose from the pump.

1. To stop the engine, set the engine switch on the side of the engine to OFF position.
2. Slide Fuel Valve lever to the left to stop fuel flow to the engine.
3. Turn off the water supply and disconnect garden hose from the Pressure Washer.
4. Squeeze the Gun trigger to release any remaining water in the system.
5. Store Spray Gun on the side and hoses inside the hose housing inside the handle.

⚠ CAUTION

Never turn off water supply with engine running. This will cause the pressure pump to overheat resulting in internal damage.

Pressure Washer **MUST** be properly stored. Refer to next pages for proper storage instructions.

MAINTENANCE

Regular maintenance will improve performance and extend life of Pressure Washer. Pressure Washer's warranty does not cover items that have been subjected to operator abuse or negligence. Only by maintaining Pressure Washer in accordance with instructions in this manual will the full value of the warranty be honored.

Some adjustments will need to be made periodically to properly maintain the Pressure Washer. All service and adjustments should be made at least one time each season. It is important that the maintenance chart below be followed.

ENGINE MAINTENANCE SCHEDULE

Frequency	Items	Each time	Every month or 20 Hrs	Every 3 months or 50 Hrs	Every 6 months or 100 Hrs	Every year or 300 Hrs
Engine oil	Check oil level	✓				
	Replace				✓ *	
Air cleaner (Filter)	Check	✓				
	Clean			✓	✓ *	
	Replace					✓ *
Deposit cup	Clean				✓	
Spark plug	Clean, adjust				✓ ***	
	Replace					✓ *
Spark Arrester	Clean				✓	
Idling	Check-adjust					✓ **
Valve clearance	Check-adjust					✓ **
Fuel tank	Clean					✓ **
Emission & Evaporation System						✓ **
Fuel supply line	Check					Every two years (Replace if necessary**)

* Recommended to be performed more often than in the schedule if operated in dusty environments.

** Recommended to be performed by authorized dealers

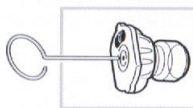
CHECKING PRESSURE PUMP OIL:

The pressure pump is maintenance free. If you notice any sign of oil leakage in and around the pump, DO NOT operate the pressure washer. Please call the pressure washer helpline at

CLEANING NOZZLE:

Occasionally, the spray wand can become clogged with foreign materials such as dirt. When this happens, excessive pressure can develop. Whenever the pressure nozzle becomes partially clogged, the pump pressure will pulsate. It should be immediately cleaned.

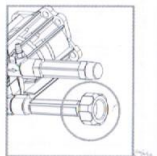
1. Make sure Pressure Washer is shut off and spray gun trigger is locked.
2. Remove high pressure spray nozzle from the spray wand. Using the nozzle cleaning needle (provided), remove any obstructions by inserting and carefully moving the pin back-and-forth through nozzle hole under clean running water.
3. After cleaning, remove the needle from nozzle and store for future use.
4. Reassemble pressure nozzle to spray wand.



CLEANING WATER INLET SCREEN FILTER:

The water inlet screen filter should be checked periodically and cleaned if necessary.

1. Disconnect inlet water hose.
2. Remove filter by grasping end and pull straight back. See
3. Clean screen filter by flushing both sides with water.
4. Insert screen filter back inside water inlet port.



⚠ WARNING Do not operate Pressure Washer without screen filter in place. Impurities entering pressure pump can cause internal damage.

CLEANING PRESSURE WASHER:

Daily or before use inspections should include areas around and underneath Pressure Washer looking for signs of fuel or oil leaks. Preventative maintenance should be taken if leaks are found. Clean accumulated debris from outside and inside Pressure Washer. Ensure all linkages, springs and other engine controls are kept clean. Inspect cooling air slots and openings on Pressure Washer. Openings must be kept clean and unobstructed for peak performance of Pressure Washer.

Engine components should be kept clean reducing risk of overheating and ignition of accumulated debris.

- Use a damp cloth to wipe exterior surfaces clean.
- Use a soft bristle brush to loosen caked on dirt or oil.
- Use a shop-vacuum to pick up any loose dirt and debris.

STORAGE

⚠ WARNING Fuel and fuel vapor are extremely flammable and explosive. Fire or explosion from misuse of fuel can cause severe burns and even death.



ENGINE

Gasoline fuel can become stale when stored over 30 days. Stale fuel causes acid and gum deposits to form in the fuel system or crucial carburetor parts. To keep fuel fresh, add the provided fuel stabilizer tablets to the fuel tank (read instructions in the back of stabilizer packaging for directions).

Draining gasoline is unnecessary if the fuel stabilizer is used according to the instructions that come with it. Run Pressure Washer engine for a minimum of two minutes, after stabilizer is added to fuel, to allow it to circulate throughout the engine. The engine and fuel can be stored up to 24 months.

NOTE DO NOT store gasoline from one season to another unless it's been treated with fuel stabilizer.

Replace fuel container, if metal, and if it begins to rust. Rust and dirt and debris can contaminate fuel supply and components resulting in poor performance and/or internal damage to engine. Fuel should be stored in newer approved plastic storage containers.

TO PROTECT AGAINST RUST FORMATION DURING STORAGE, OIL THE CYLINDER BORE:

- Remove spark plug and pour approximately 1/2 oz (15 ml) of clean engine oil into the cylinder.
- Install spark plug and pull starter cord slowly to distribute oil.
- Make sure engine ON/OFF switch is OFF. Slowly pull the starter cord 2 to 3 times to distribute and coat the cylinder bore with oil. DO NOT start engine at this time.

⚠ WARNING

Unintentional sparking can cause fire or electrical shock. Failure to observe this warning can cause severe property damage, severe burns and even death.



Disconnect spark plug wire from spark plug and cover tip of spark plug wire with insulating tape and place wire where it cannot come in contact with spark plug or Pressure Washer frame.

PRESSURE PUMP

1. Drain all water from pressure hose, coil and store it in cradle of pressure washer handle.
2. Drain all water from spray gun and spray wand by holding spray gun in vertical position with nozzle pointed downward. Squeeze trigger to remove fluids from spray gun and spray wand. Store in spray gun/hose holder.
3. Store chemical hose, high pressure hose and spray wand so they are protected from damage, such as being run over.

It is **RECOMMENDED** that you follow these steps to protect the internal seals of Pressure Washer when storing unit for more than 30 days and/or when freezing temperatures are expected.

1. Obtain a funnel, six ounces of RV antifreeze and approximately 36 inches of garden hose with a male hose connector on one end.

CAUTION Use only RV antifreeze. Any other type of antifreeze is corrosive and can damage pressure pump.

2. Connect 36 inch length of garden hose to water inlet of pressure pump.
3. Add RV antifreeze using the funnel.
4. Make sure engine ON/OFF switch is OFF. Slowly pull engine starter cord several times until antifreeze comes out of pressure hose connection of pressure pump. **DO NOT** start engine at this time.
5. Remove hose from water inlet of pressure pump.

PRESSURE WASHER

1. Cover Pressure Washer with a suitable cover that does not retain moisture such as a plastic or plastic coated tarp.
2. Store Pressure Washer in a clean, dry area.

WARNING Certain storage covers can be flammable or can melt in higher temperatures. Do not place storage cover over Pressure Washer unit until it has completely cooled.



PREPARING FOR USE AFTER STORAGE

1. Slowly pull the Starter cord a few times to clean oil from the cylinder or to eject any antifreeze from the pump which were added prior to storage.
2. Remove the spark plug from the cylinder. Wipe oil from the spark plug and return it to the cylinder and retighten.
3. Reconnect the spark plug wire.

TROUBLESHOOTING GUIDE

Problem	Probable Cause	Solution
Engine shuts down when running.	1. Out of fuel. 2. Low Engine Oil	1. Fill fuel tank. 2. Add oil.
Engine will not start; or starts and runs rough.	1. Engine On/Off set to "OFF" position. 2. Fuel valve is in "OFF" position. 3. Dirty air cleaner. 4. Out of fuel. 5. Stale fuel. 6. Spark plug wire not connected to spark plug. 7. Bad spark plug. 8. Water in fuel. 9. Flooded. 10. Excessively rich fuel/air mixture. 11. Intake valve stuck open or closed. 12. Engine has lost compression. 13. Low engine oil. 14. Wrong Fuel. 15. Engine is too hot 16. Chock is in wrong position 17. Pressure builds up after 2 pulls on starter coil or after initial use.	1. Set switch to "ON" position. 2. Turn fuel valve to "ON" position. 3. Clean or replace air cleaner. 4. Fill fuel tank. 5. Drain fuel tank and carburetor; fill with fresh fuel. 6. Connect wire to spark plug. 7. Replace spark plug. 8. Drain fuel tank and carburetor; fill with fresh fuel. 9. Wait 5 minutes and re-crank engine. 10. Call Customer Service: 11. Call Customer Service: 12. Call Customer Service: 13. Add oil. 14. Use recommended fuel. 15. Allow engine to cool 16. Change chock position 17. Squeeze gun trigger to relieve pressure.

Problem	Probable Cause	Solution
Engine "hunts" or falters.	1. Carburetor is running too rich or too lean.	1. Call Customer Service:
Engine lacks power.	1. Cylinder pressure is low. 2. Dirty air cleaner.	1. Call Customer Service: 2. Replace air filter.
No pressure or Low pressure.	1. Spray wand not set to high pressure. 2. Inadequate water supply. 3. Hose fitting leaks during high pressure. 4. Nozzle obstructed. 5. Water filter screen obstructed. 6. Defective pump 7. Air in hose. 8. Choke lever in choke position. 9. Throttle control lever is hot in fast position.	1. See "SELECTING THE RIGHT NOZZLE" section. 2. Water supply must be 5 GPM @ 20 psi. 3. Tighten hose fitting. Use thread sealant tape if necessary. 4. Clean Nozzle (See Maintenance) 5. Remove and clean filter. 6. Call Customer Service: 7. Squeeze trigger to remove air. 8. Move choke to "RUN" position. 9. Move throttle control lever from fast position.
Water leaking at pump.	1. Loose connections. 2. Worn or broken O-rings. 3. Pump head or tubes damaged from freezing.	1. Tighten connections. 2. Call Customer Service: 3. Call Customer Service:

Problem	Probable Cause	Solution
Pump will not draw chemicals.	<ol style="list-style-type: none"> 1. Wrong size spray nozzle. 2. Chemical hose/filter clogged. 3. Chemical screen not in chemical. 4. Chemical solution too thick. 5. Chemical build-up in chemical injector. 	<ol style="list-style-type: none"> 1. See "SELECTING THE RIGHT NOZZLE" section. 2. Clean hose/filter. 3. Ensure end of chemical hose is fully submerged into chemicals. 4. Dilute chemical. Chemical solutions should have same consistency as water. 5. Clean or replace. Call Customer Service:
No or low pressure (after period of normal use).	<ol style="list-style-type: none"> 1. Worn seal or packing. 2. Worn or obstructed valves. 3. Worn unloader piston. 	Clean or replace. Call Customer Service:
Water leaking at spray gun/spray wand connection.	<ol style="list-style-type: none"> 1. Worn or broken O-ring. 2. Loose hose connection. 	<ol style="list-style-type: none"> 1. Worn or broken O-ring. 2. Tighten hose connection.
Oil leaking at pump	<ol style="list-style-type: none"> 1. Oil seals worn. 	<ol style="list-style-type: none"> 1. Call Customer Service:
Pump pulsates	<ol style="list-style-type: none"> 1. Nozzle obstructed. 2. Air in the system 	<ol style="list-style-type: none"> 1. Clean Nozzle (See Maintenance) 2. Squeeze trigger to remove air.

GENERAL INFO:

Gas	<ul style="list-style-type: none"> • Use fresh high quality unleaded gasoline (minimum 87 octane) • Add stabilizer to fuel tank and run engine for 5 minutes before storage.
Oil	<ul style="list-style-type: none"> • pump oil: use only 30- weight non-detergent oil • Engine oil: Use only SAE 10W-30, 600ml weight non-detergent oil.
Water	<ul style="list-style-type: none"> • Use only cold water. • Do not operate pressure washer with clogged or missing water filter screen. • Do not operate pressure washer without adequate water supply to pressure pump. Adequate water supply is a minimum of 20 PSI @ 5 GPM.
Pressure Adjustment	<ul style="list-style-type: none"> • Pressure setting is preset at factory. • For lowering pressure, refer to PRESSURE ADJUSTMENT section in this manual.
Pump	<ul style="list-style-type: none"> • Squeeze spray gun trigger every 2 minutes while engine is running. • Do not allow water to freeze in pump.
By-Pass Mode	<ul style="list-style-type: none"> • Never leave unit running for more than 2 minutes without squeezing spray gun trigger. Doing so could damage pump and void warranty.
Thermal Relief Valve	<ul style="list-style-type: none"> • Pump is equipped with a thermal relief valve. If water overheats, this valve opens releasing gush of water. Afterwards, the valve closes returning pump to normal operation.

Hose	<ul style="list-style-type: none"> Do not allow hoses to come in contact with engine muffler during or immediately after use. DO NOT pull unit by pressure hose.
Engine	<ul style="list-style-type: none"> Do not adjust or attempt maintenance without consulting supplied engine manual or having adjustments made at an authorized service center. Add stabilizer to fuel tank and let engine run for 5 minutes before storage. Always turn on water before starting engine.
Soap/Chemicals	<ul style="list-style-type: none"> Use only soaps and chemical detergents designed for pressure washer use. Use Chemical nozzle (Black) with Soap/Chemicals.
Nozzle	<ul style="list-style-type: none"> Always keep nozzles unclogged. Use ONLY chemical nozzle when using chemical and cleaning solvents.
Storage or Winterizing	<ul style="list-style-type: none"> Run clean water through chemical inlet. Add stabilizer to any remaining fuel in fuel tank. Do not allow water to freeze in pressure pump, spray gun, spray wand or hoses.

SPECIFICATIONS

Max Pressure	3000 PSI
Max Water Flow	2.3 GPM
Pump Type	Axial
Engine/Type	RH265
HP/RPM	6.5 / 3600
Displacement	196 CC
Fuel	0.95GAL
Pressure Hose	20 FT.
Low Oil Sensor	YES
Thermal Relief Valve	YES

WARRANTES

KOHLER EMISSION CONTROL DEFECTS WARRANTY COVERAGE

Spark ignited small off-road engines are warranted relative to emission control parts defects for a period of two (2) years, subject to the provisions stated below. If any emission related part on your engine is defective, the part will be repaired or replaced by KOHLER. The warranty period begins on the date the product is delivered to the initial owner.

OWNERS WARRANTY RESPONSIBILITY

As the spark ignited small off-road engine owner; you are responsible for the maintenance required, what are listed in the owner's manual. KOHLER recommends that you retain all receipts covering maintenance on your spark ignited small off-road engine, but KOHLER cannot deny warranty solely for the lack of receipts or for your failure to ensure the performance of all scheduled maintenance.

As the owner of a spark ignited small off-road engine, you should however be aware that KOHLER may deny you warranty coverage if your spark ignited small off-road engine or part has failed due to abuse, neglect, improper maintenance or unapproved modifications.

You are responsible for presenting your spark ignited small off-road engine to an authorized service center as soon as a problem exists. The undisputed warranty repairs should be completed in a reasonable period of time, not to exceed 30 days. For the location of an authorized service center and any questions you may have regarding your warranty rights and responsibilities, you should call our parts and technical support group toll free at 800-544-2444

The emission warranty is a defects warranty and defects are judged on normal engine performance. The warranty is not related to an in-use emission test.

EMISSION CONTROL SYSTEM WARRANTED PARTS

Coverage under this warranty extends only to the parts listed below (the emission control system parts) to the extent that these parts were present on the engine purchased.

Fuel Metering System
 Carburetor and/or internal parts
 Intake manifold
 Evaporative System
 Fuel tank, Fuel cap, and tette
 Air Induction System
 Air cleaner*
 Intake manifold
 Exhaust System
 Exhaust manifold
 Ignition System
 Flywheel magneto
 Ignition coil assembly
 Spark plug*
 Crankcase Emission Control System
 Crankcase breather tube

AMP



